




Network

-  Sigfox™
-  LoRaWan®
-  Local Modbus






Performances

-  Range : up to 15km

Autonomy

-  5 years with 3 Tx/day
-  Two AA Lithium batteries
-  Battery level indicator

Divers

-  USB Configuration
-  SMS and Emails alerts
-  Web platform
-  Validation button
-  Waterproof IP65 box



The ACW-DI allows you report a digital input towards a web platform and also a sending of alert messages in case of **change of state** on the digital inputs. It also allows you to **remote-read** the informations from a **water, gas and electricity** counter done on a regular basis and by **threshold alert**.

This modem exists in two different versions 2 or 4 digital inputs intended to work on the new LPWAN networks dedicated to the IoT: Sigfox, LoRaWan or local Modbus radio. Ideal to supervise your equipment's on the web, It is perfectly adapted for an urban environment and to be used in a difficult environment.



Technical features

Dimensions	160 x 53 x 53 mm		
Antenna	Integrated (¼ wave)		
Temperature	-20°C to +55°C (functioning mode) -40°C to +70°C (storage mode)		
Mounting	wall, tube, DIN-Rail		
Box	IP 65		
Power supply	2x AA Lithium batteries		
Weight	100 g		
Frequency	865 – 870 MHz		
Power	25 mW (14 dBm)		
Speed	Local : 1.2 to 115 Kbit/s Sigfox : 100 bps LoRaWan : 300 bit/s to 10 Kbit/s		
Consumption	Local :	Sigfox :	LoRa :
Tx mode	60 mA	60 mA	50 mA
Sleep mode	4 µA	4 µA	0,6 µA
Rx mode	35 mA	35 mA	18 mA
SNIFF mode	300 µA		

References

2 digital inputs :

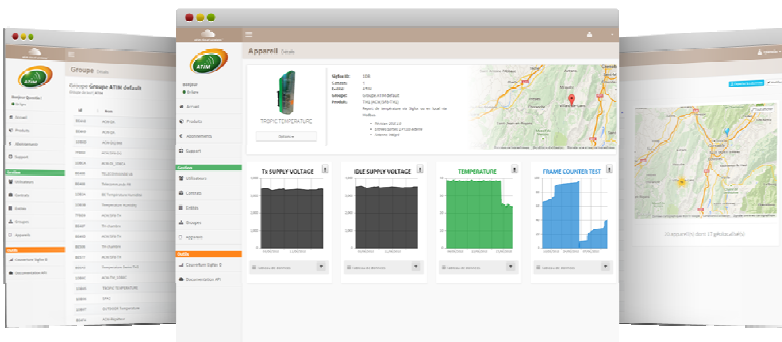
- ACW/SF8-DI2
Sigfox and local
- ACW/LR8-DI2
LoRaWan and local
- ACW/868-DI2
Local only

4 digital inputs :

- ACW/SF8-DI4
Sigfox and local
- ACW/LR8-DI4
LoRaWan and local
- ACW/868-DI4
Local only

Available with the ACW platform or the modem on its own.

Atim Cloud Wireless™ Platform



Control all your atim devices using Sigfox and LoRa on the same secured Web platform !

Manage and Operate your IoT sensors data very easily!

Thanks to the new **LPWAN** network device remote management is simple and accesible to anyone.

- Managing the products by groups
- Signal quality
- SMS Alerts
- Email Alerts
- Secured API
- Find all your data in real time on a graphic/control panel
- Personalization of the graphics and information channels
- Export your data (by product or by group)
- Geo-tracking of your products
- Radio coverage tool



ATIM Radiocommunications
Chemin des Guillels
38250 Villard de Lans
France

www.atim.com
info@atim.com
+33 4 76 95 50 65

