




## Network

-  Sigfox™
-  LoRaWan®
-  Local Modbus




## Performances

-  Range : up to 15km

## Autonomy

-  5 years with 3 Tx/day
-  Two AA Lithium batteries
-  Battery level indicator

## Divers

-  USB Configuration
-  SMS and Emails alerts
-  Web plateforme



The ACW-TM allows you to send an ambient **temperature/humidity information**. This transmission is done on regular basis and by **threshold alert**. In case of a problem, an email or an sms alert will be sent.

This **temperature/humidity** sensor exists in different versions intended to work on the new LPWAN networks dedicated to the IoT: Sigfox, LoRaWan or local Modbus radio. Ideal to supervise your equipment's on the web, It is perfectly adapted for energy optimization for tertiary and industrial buildings.



## Technical features

<b>Dimensions</b>	80 x 80 x 35 mm		
<b>Antenna</b>	Integrated (¼ wave)		
<b>Temperature</b>	-20°C to +55°C (functioning mode) -40°C to +70°C (storage mode)		
<b>Mounting</b>	wall, tube, DIN-Rail		
<b>Box</b>	Home automation		
<b>Power supply</b>	2x AA Lithium batteries		
<b>Weight</b>	100 g		
<b>Frequency</b>	865 – 870 MHz		
<b>Power</b>	25 mW (14 dBm)		
<b>Speed</b>	Local : 1.2 to 115 Kbit/s Sigfox : 100 bps LoRaWan : 300 bit/s to 10 Kbit/s		
<b>Consumption</b>	Local :	Sigfox :	LoRaWan :
<b>Tx mode</b>	60 mA	60 mA	50 mA
<b>Sleep mode</b>	7 µA	7 µA	0,6 µA
<b>Rx mode</b>	35 mA	35 mA	18 mA
<b>SNIFF mode</b>	300 µA		

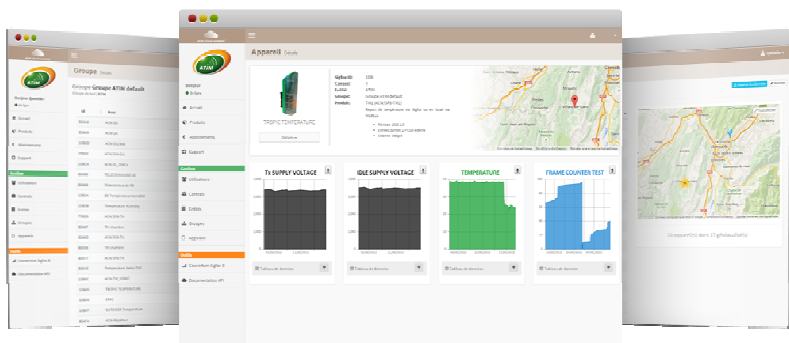
## References

### Internal sensor :

- ACW/SF8-TH  
*Sigfox and local*
- ACW/LR8-TH  
*LoRaWan and local*
- ACW/868-TH  
*Local only*

Available with the ACW platform or the modem on its own.

## Atim Cloud Wireless® Plateform



Control all your atim devices using Sigfox and LoRa on the same secured Web platform !

Manage and Operate your IoT sensors data very easily!

Thanks to the new LPWAN network device remote management is simple and accesible to anyone.

- Managing the products by groups
- Signal quality
- SMS Alerts
- Email Alerts
- Secured API
- Find all your data in real time on a graphic/control panel
- Personalization of the graphics and information channels
- Export your data (by product or by group)
- Geo-tracking of your products
- Radio coverage tool



### ATIM Radiocommunications

Chemin des Guillets  
38250 Villard de Lans  
France

www.atim.com  
info@atim.com  
+33 4 76 95 50 65





**ATIM Radiocommunications**

Chemin des Guillels  
38250 Villard de Lans  
France

[www.atim.com](http://www.atim.com)  
[info@atim.com](mailto:info@atim.com)  
+33 4 76 95 50 65

