

# ACW-TM1

## Temperature radio sensor

TEMPERATURE • ALERT • IP65 • IoT CLOUD • USB

### Networks



Sigfox™



LoRaWan®

### Performances



Range : up to 15km

### Autonomy



5 years with 3 Tx/jour



Two lithium batteries AA



Battery level indication

### Diverse



Configuration by USB



SMS & Emails alerts



Web Platform



Waterproof housing  
IP65



The ACW-TM1 can be used to report a temperature using a PT100 or PT1000 remote analog probe and transmit it via radio to the cloud. The transmission of data is done at regular intervals and by alerts of exceeding thresholds. In case of anomaly, an email or SMS will be instantly sent to one or more recipients previously configured. The ACW-TM1 is versatile and will find its place in many applications.

This temperature sensor is available in different versions for use on LPWAN networks dedicated to the Internet of Things: Sigfox and LoRaWan. Ideal to supervise your equipment on the Web, it is perfectly adapted in urban environment and for use in buildings (boiler rooms for example).



**ATIM Radiocommunications**

Chemin des Guillets  
38250 Villard de Lans  
France

www.atim.com  
info@atim.com  
+33 4 76 95 50 65



## Technical features

<i>Dimensions</i>	177 x 55 x 55 mm	
<i>Antenna</i>	Integrated (¼ wave)	
<i>Temperature</i>	-20°C to +55°C (Operating mode) -40°C to +70°C (storage)	
<i>Fixation</i>	Mural, tube, DIN Rail	
<i>Housing</i>	IP 65	
<i>Power supply</i>	Two Lithium batteries AA	
<i>Weight</i>	160 g	
<i>Frequency</i>	865 – 870 MHz	
<i>Power</i>	25 mW (14 dBm)	
<i>Speed</i>	Sigfox: 100 bps LoRaWan: 300 bit/s à 10 Kbit/s	
<i>Consumption</i>	Sigfox :	LoRaWan :
<i>Tx Mode</i>	60 mA	60 mA
<i>Srandby</i>	4 µA	2.2 µA
<i>Rx Mode</i>	35 mA	25 mA

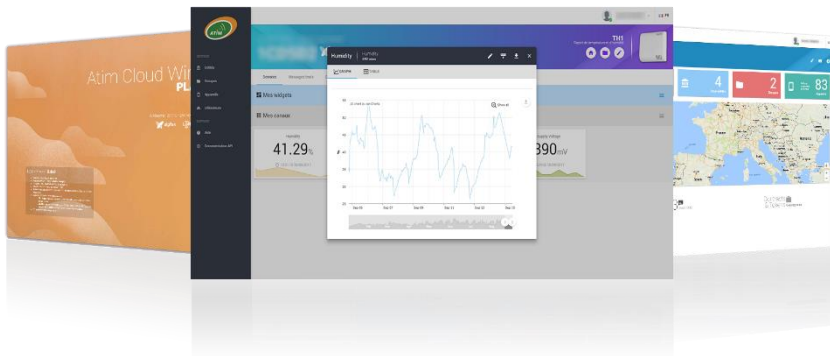
## References

### 1 input PT100 :

- ACW/SF8-TM1  
*Sigfox*
- ACW/LW8-TM1  
*LoRaWan*

Available with ACW Platform subscription.










## Atim Cloud Wireless™ Platform



Control all your ATIM devices using Sigfox and LoRaWAN on one single secured web platform.

Access and manage your IoT data very easily.

Thanks to the new LPWAN networks, device remote management and telemetry become simple and accessible to everyone.

-  Device management group
-  Real-time data follow-up through user-friendly control panel
-  First-class signal quality
-  Personalization of graphics and information channels
-  SMS alerts
-  Export your data (by product or by group)
-  Emails alerts
-  Geo-tracking of each product
-  Secured API



### ATIM Radiocommunications

Chemin des Guillels  
38250 Villard de Lans  
France

www.atim.com  
info@atim.com  
+33 4 76 95 50 65

