



TEMPERATURE - HUMIDITY

IoT sensor











Features

The THI facilitates the monitoring of comfort and energy efficiency indicators in your rooms and buildings thanks to its temperature and humidity sensors.

Measurements are regularly transmitted to a local gateway or via the [Sigfox](#) or [LoRaWAN](#) networks. The configuration is done from the tools of the ATIM suite.

Compatible with the computer and mobile versions of the [IoT web platform](#)** , the visualization of data, the remote parameterization of the sensor and the configuration of alerts according to predefined thresholds are made possible in a few clicks.

-  Range : -50°C to +125°C
Precision : +/- 0.3°C between -10°C to 85°C
-  Range : 0% RH to 100% RH
Precision : +/- 3% RH between 0 to 80 % RH
-  IP30 protection rating
-  1 temperature and humidity measurement/hour
Sigfox 5+ years*
LoRaWAN 12+ years*
-  Interchangeable batteries
-  Setup via USB, downlink
-  Plug & Play
-  GPS option in LoRaWAN (only temperature monitoring)

References

Part number	Technology
ACW/TH-I	Sigfox LoRaWAN
ACW/TH-G	LoRaWAN + GPS

* Subjected to the environment conditions
**Available with a subscription to Atim Cloud Wireless™ web platform

OPTIMIZE AND CONTROL ENERGY PERFORMANCE



Smart Building

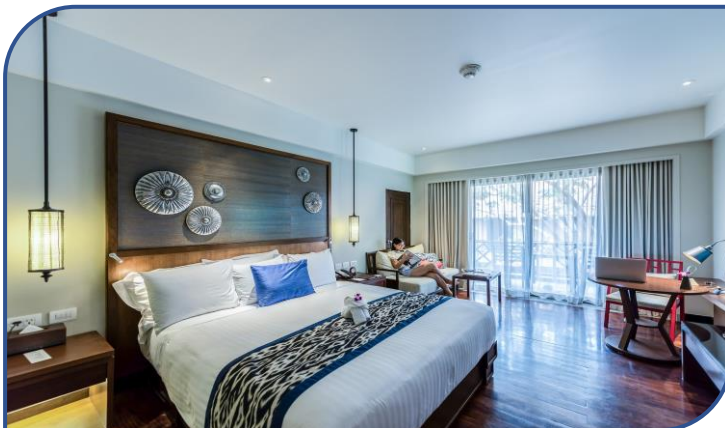


Smart City



Smart Industry

- Monitoring of the ambient temperature and humidity of a public building.
- Comply with the law on energy transition which recommends an ambient temperature of 19 ° C in tertiary buildings and 22 ° C in hospitals.
- Limit periods of overheating.
- Rapid ROI thanks to energy savings.
- ATIM works with the largest energy suppliers.



- Guarantee the comfort and satisfaction of your clients.
- Ensure optimum temperature in all rooms.
- Control the building's energy budget.
- ATIM sensors are installed in many hotels in France and abroad.

- Monitor the temperature inside a work site electrical cabinet.
- Prevent the potential risk of fire due to an electrical overload or too high temperature.
- Locate your electrical cabinets on different sites and ease inventories thanks to the GPS version.
- ATIM equips thousands of construction sites for a major player in the construction industry.

