



BRIDGE MODBUS RADIO MODEM

Radio modem



- Bridge mode
- RS232 or RS485 connections
- 10-30 Vdc external power supply
- Setup via USB
- 22+ km* radio range

References

Part number	Technology
ACW/DINRS+	Local 868MHz

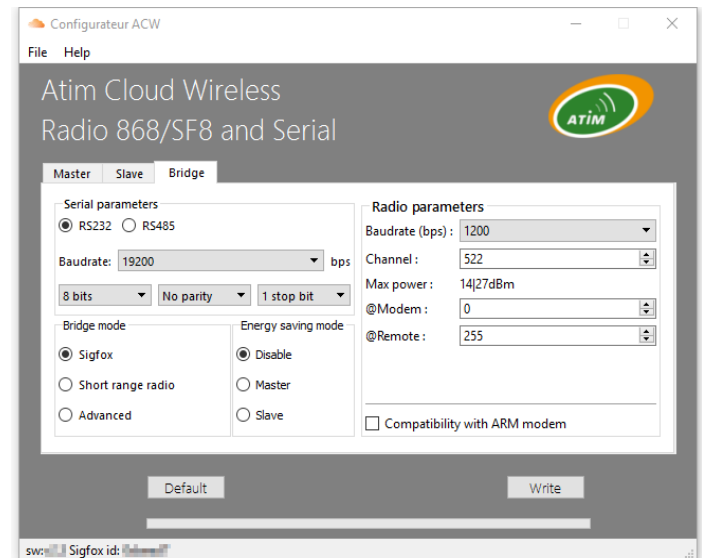
Features

ACW-DINRS+ transmits data from one Modbus device to another via radio. 500mW radio power provides a great range suitable for many applications.

The devices are connected to the PLCs via an RS232 or RS485 link (transparent mode).

Bridge mode: allows you to create a point-to-point or point-to-multipoint link by interconnecting devices equipped with an RS232 or RS485 interface.

The bridge mode setup is to be made on the ACW configurator.



* Subjected to the environment conditions